



CAMP BUCKS

DOYLESTOWN



2023
memories

best
summer
ever!

Every Summer
HAS A STORY

Chapters

Welcome	2
Why Camp Bucks	3
Doylestown.....	4
Specialty Camp	5
Sports Camps	6
Metro Esports.....	7
Doylestown Camp Selection Grid	
Adventure Camp Grid	8
Specialty Camp Grid	8
Sports Camp Grid	9
Metro Esports Grid	9
Extended Care Grid.....	9
Field Trip Grid	9
Ability Camps.....	10
Doylestown Ability Camp Selection Grid	
Ability Adventure Camp Grid	11
Ability Teen Summer Leaders in Training Grid	11
Specialty Camp Grid	11
Sports Camp Grid	12
Metro Esports Grid	12
Extended Care Grid.....	12
Field Trip Grid	12
Camp Selection Form.....	13

Welcome



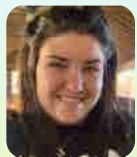
Every summer has a story... we invite your child to write theirs with us!

At YMCA of Bucks and Hunterdon Counties, we help foster personal growth and life long friendships for children by providing them with fun, safe, educational and recreational camp programs. All of our outdoor experiences, group activities, sports and arts are facilitated by our exceptional, highly motivated staff.

Our diverse weekly themes will guarantee that no two weeks will be the same. As the author, character and illustrator of your child's own personal story, they will sure have a lot to write about. Let us help to make the summer of 2023 one for the "books".



Taylor Jermyn
Director of Youth Development
doylestowncamp@ymcabhc.org



Kaitlyn Stevens
Associate Director of Ability and Camp
abilitycamp@ymcabhc.org



Joey Milillo
Adventure Camp Coordinator
doylestowncamp@ymcabhc.org

OPEN HOUSE EVENTS

Ask questions and meet camp staff! Visit ymcabhc.org/camp for days and times.

WHAT PARENTS ARE SAYING...

I am very impressed with the organization of the Doylestown camp. Well done!

My kids love the Doylestown YMCA camp. They love the counselors and have so much fun.

Staff was so kind, welcoming, and cheerful!

All of the staff are professional, warm and welcoming. I have had my granddaughter participate for three summers now, and it has been the best experience for her. The fact that so many counselors are consistent from one summer to another speaks volumes about your treatment of your team. I wish there were more superlatives to describe how wonderful this camp is!

Absolutely LOVE the camp and the staff! It's been a great experience!



?

ASK ABOUT OUR SIBLING DISCOUNT

Email doylestowncamp@ymcabhc.org for more info!

Why Camp Bucks?

Kids grow, build skills and gain self confidence in a safe, values-based environment. Camp Bucks has so much to offer youth from preschool through 10th grade. What makes us the best choice for your child?

- **Safe, enjoyable and affordable** option for families
- **Flexible scheduling** with weekly half-day, full-day and extended care options. Weekly three-day full-day adventure camp care is available for families looking for partial week programs.
- **Weekly themes**, activities and special events
- **Age-appropriate curriculum** that encourages learning, exploration and fun
- **Over 20 acres of open grounds** with gaga courts, sand volleyball and outdoor basketball courts
- **Specialty and sports camps** including Aqua Bucks Swim Camp, Camp Chefs, Dance, Sports Frenzy, **NEW! Nerf Camp** and so much more!
- **All campers are swim tested for safety**
- **Highly trained and engaged camp staff**
- **Field trips** add on options for 2 weeks! Register early to secure your spot!
- **Campers** should pack **2 snacks** and a **refillable water bottle each day**
- **NEW! PIZZA Fridays** are included with weekly tuition for full day campers!



FINANCIAL ASSISTANCE AVAILABLE

We are pleased to offer assistance to those who need a helping hand. New applicants should submit a completed Financial Assistance Application along with support documentation. Applications can be found at ymcabhc.org/camp. Please allow three weeks for processing.

If you already have a current financial assistance contract, please submit your camp registration packet via email to crefice@ymcabhc.org or drop off/mail to: YMCA of Bucks and Hunterdon Counties, Attn: Camp Registration, 2500 Lower State Road, Doylestown, PA 18901 **at least one week prior to the first day of camp you would like your child to attend. Register early to secure your spot.**

Financial Aid Application due: One month prior to the day you would like for your child to begin camp

Camp Registration due: One week prior to the day you would like for your child to begin camp.

Doylestown

Camp Bucks provides a traditional camp experience in an outdoor* setting that promotes learning, caring, teamwork and friendship. Each week your child will have the opportunity to enjoy a variety of age-appropriate activities including sports, games, arts, music, swimming, science and more!

*In the event of inclement weather or heat advisory, campers are safely moved indoors.



SUMMER MEMBERSHIP

Purchase a Y Summer Membership and receive member pricing for camp and programs at ALL of our locations! Membership runs Jun 1-Aug 31.

YOUTH	TEEN	FAMILY 1	FAMILY 2
\$88	\$123	\$356	\$403

ADVENTURE DAY CAMPS

Children are grouped by grade to encourage skill building as well as teamwork, sportsmanship, camaraderie, and friendship. Children are grouped in the following categories: **Cubs K-1st**, **Wolves 2nd**, **Tigers 3rd**, **Lions 4th-5th** & **Eagles 6th-7th**.



Adventure Camp Field Trip Add Ons

7/12- Fonzilla

8/2- Phila. Rock Gym

See camp grid for more details



Adventure Camp Swim Schedule

Morning Swim: **Lions**, and **Eagles**

Afternoon Swim: **Cubs**, **Wolves**, and **Tigers**

COUNSELOR IN TRAINING

Counselor in Training (CIT) program develops teens into positive role models. CITs partner with camp staff to work with young campers and learn responsibility and leadership. Successful CITs will receive a letter of recommendation at the end of summer. An interview is required to become a CIT. Email doylestowncamp@ymcabhc.org to schedule an interview.

SUMMER WEEKLY THEMES

6/19-6/23	Hollywood Stars
6/26-6/30	Treasure Island
7/3-7/7*	Everyday is a Holiday (*no camp 7/4)
7/10-7/14	Under the Sea
7/17-7/21	Superhero Training
7/24-7/28	Welcome to the West
7/31-8/4	Splash of Color
8/7-8/11	Come One, Come All to the Carnival
8/14-8/18	Mischief, Mayhem, and Make Believe
8/21-8/25	Ultimate Survivor
8/28-8/31*	Best of the Best! (*no camp 9/1)

JR. ADVENTURE DAY CAMPS

Younger campers enjoy a modified Adventure Camp curriculum that includes science, arts and crafts, sports and physical activity, fine and gross motor skill development and social development.

SPECIALTY CAMPS

Specialty Camp is the perfect camp for the child who loves to participate in creative activities such as arts and crafts, cooking, music, dance and more.

SPORTS CAMPS

Sports Camp is the perfect camp for the child who wants a little bit of everything when it comes to sports and enrichment. This camp is led by a dynamic and enthusiastic staff. Campers will enjoy participating in a wide array of sports and activities to keep their bodies and minds active.

ESPORTS CAMPS

Metro Esports and the YMCA have partnered to offer Esports and TechU Summer Camps. These camps are filled with gaming and educational programs to enrich your child's ability to communicate, socialize, learn and understand the various occupational outlets that gaming and esports have to offer, right from our brand-new gaming lounge inside the YMCA.



Specialty Camps

Aqua Bucks Swim Camp

Bring your swimsuit and a smile as we spend the week developing skills in the water. Campers will work with instructors on techniques while building confidence in themselves.

Archery

Take aim as we spend the week learning the basics including technique, maintenance and styles. End your adventure with a friendly competition that would make Robin Hood jealous!

Campers Create

Time to get creative! An introduction to a variety of art projects that may include painting, drawing, clay work, simple crafts, and more. The week will conclude with a showcase on Friday at 11 AM.

Camp Chefs

Campers will create mouth-watering dishes while learning the basics of cooking. Each child will leave with a recipe book containing the creations made that week.

Dance

Learn routines in hip hop, ballet, jazz and modern dance. The week will conclude with a performance on Friday at 3 PM.

Empower U!

A week long camp to strengthen the self esteem of girls grades 7th-10th. Campers will participant in a variety of fun uplifting workshops along with daily fitness activities. The cost of Empower U Camp is covered by one of our generous donors and space is limited.

Future Builders

Think out-of-the-box to solve problems using aerodynamics, clean energy and structural design.

Kids Yoga

Campers will learn different yoga poses and play games to help with balance, strength and flexibility.

Y.S.T.E.M.

Use reasoning and collaboration to learn science, technology, engineering and mathematics in a fun and engaging way. Inspire creativity and innovation while completing hands on experiments.

Esports & TechU Camps (See page 7)



Babysitting Courses are available through our American Red Cross Training Course held periodically through the year. Check our website for more information.



Sports Camps

Basketball

Players are divided into teams by age and participate in different skill stations each day. Stations help develop dribbling, shooting, passing and defensive skills. Players take part in game play each day.

Cheerleading

Campers will be introduced to the fundamentals of cheerleading, including chants, motion, tumbling, stunting and jumps while learning routines and cheers. The week concludes with a Cheer performance Friday at 11 AM.

Cross Country

Master the fundamentals of running, while strengthening race techniques and learn proper mechanics. The week concludes with a timed race Friday morning.

Gymnastics

This camp will serve as an introduction to skills on the Gym Kids Circuit and will progress to more independent and complex tumbling skills. This camp is the perfect way to see if your child may have an interest in gymnastics.

Nerf Camp

The fun never ends in NERF camp. Join us for an action packed week! Campers will develop team work, problem solving, sportsmanship and put strategy into practice through games of NERF tag, challenges and scenarios. The YMCA provides the space, obstacles, coordination, supervision and FUN! YMCA provides NERF blasters, darts, equipment and safety goggles.

Kids Tri Training Camp

Spend the week learning the basics of a triathlon including swimming, running and biking. The week will conclude with a time trial in each event.

NFL Flag Football

Players are divided into teams by age and participate in four skill stations each day. Stations help develop passing, route running and defensive skills. Players compete each day in games and learn to call their own plays as the week progresses. The week concludes with the Y Super Bowl. All players receive their own NFL Flag jersey and belt to take home.

Obstacle Ninja

Run through an obstacle course like a warrior! Train with strength and conditioning exercises, daily challenges, and ninja courses.

Skate & Scooter

Campers will spend the week learning basics including safety, repairs, tricks and terminology. Safety equipment and board/scooters required.

Soccer

Players are divided into teams by age and participate in different skill stations each day. Stations help develop passing and defensive technique. Shin guards recommended.

Sports Frenzy

Sports Frenzy gives campers the opportunity to try and learn about new sports and recess games while promoting skill development, self-confidence, movement, teamwork, sportsmanship and FUN!



Metro Esports

AM CAMP ONLY (9AM-12PM)

NEW! Gaming and Esports

Esports Camp at the YMCA offers an outlet for competing with friends in everyone's favorite gaming titles and the ability to learn about the gaming and esports industry in a very fun and hands-on way! Compete with or against your friends in daily point-earning competitions and tournaments while learning the many career and creative pathways that exist.

6/19-6/23	Roblox, Fall Guys, and Minecraft
6/26-6/30	Fortnite, Overwatch, and Spellbreak
7/3-7/7	Super Smash Bros, Multiversus, and Brawlhalla
7/10-7/14	Rocket League, NBA, and Madden
7/17-7/21	Gran Turismo, Forza Motorsport, and Mario Kart
7/24-7/28	Roblox, Fall Guys, and Minecraft
7/31-8/4	Fortnite, Overwatch, and Spellbreak
8/7-8/11	Super Smash Bros, Multiversus, and Brawlhalla
8/14-8/18	Rocket League, NBA, and Madden
8/21-8/25	Gran Turismo, Forza Motorsport, and Mario Kart
8/28-8/31	Camper Favorites

PM CAMP ONLY (1PM-4PM)

NEW! TechU

Tech Camps at the YMCA is an innovative approach to creating opportunities for kids of all ages, interest levels and abilities to pursue their interests in gaming and technology. Join us this summer for unique weekly sessions featuring accredited STEAM learning within your favorite games and platforms.

6/19-6/23	Minecraft & Code**
6/26-6/30	Roblox & Code**
7/3-7/7	Unity Game Design & Animation**
7/10-7/14	Intro to Game Building in Python**
7/17-7/21	Building a Gaming PC
7/24-7/28	Minecraft & Code**
7/31-8/4	Roblox & Code**
8/7-8/11	Esports Academy
8/14-8/18	Streaming & Content Creating
8/21-8/25	Esports Academy
8/28-8/31	Gaming: Camper Favorites

**Camper will receive a STEM.org certificate of completion



Doylestown CAMP GRID

Place an "X" on your desired camp in the corresponding box

GRADE in Sept '23	TIME	MEMBER PRICE	NON MEMBER PRICE	WEEK 1 6/19-6/23	WEEK 2 6/26-6/30	WEEK 3 7/3-7/7 no camp 7/4	WEEK 4 7/10-7/14	WEEK 5 7/17-7/21	WEEK 6 7/24-7/28	WEEK 7 7/31-8/4	WEEK 8 8/7-8/11	WEEK 9 8/14-8/18	WEEK 10 8/21-8/25	WEEK 11 8/28-8/31 no camp 9/1
----------------------	------	-----------------	------------------------	---------------------	---------------------	----------------------------------	---------------------	---------------------	---------------------	--------------------	--------------------	---------------------	----------------------	-------------------------------------

ADVENTURE DAY CAMPS – when combining AM & PM camps, campers remain in our care during 12PM-1PM time gap for lunch

Please note: some Adventure Camps are full.

ADVENTURE: 5 DAY FULL DAY	K-7TH	9AM-4PM	\$275	\$385	9AM-4PM	9AM-4PM	9AM-4PM	9AM-4PM	9AM-4PM	9AM-4PM	9AM-4PM	9AM-4PM	9AM-4PM	N/A	N/A
ADVENTURE: 5 DAY AM	K-7TH	9AM-12PM	\$149	\$209	9AM-12PM	9AM-12PM	9AM-12PM	9AM-12PM	9AM-12PM	9AM-12PM	9AM-12PM	9AM-12PM	9AM-12PM	N/A	N/A
ADVENTURE: 5 DAY PM	K-7TH	1PM-4PM	\$149	\$209	1PM-4PM	1PM-4PM	1PM-4PM	1PM-4PM	1PM-4PM	1PM-4PM	1PM-4PM	1PM-4PM	1PM-4PM	N/A	N/A
ADVENTURE: 3 DAY FULL DAY	K-7TH	9AM-4PM	\$221	\$310	9AM-4PM	9AM-4PM	9AM-4PM	9AM-4PM	9AM-4PM	9AM-4PM	9AM-4PM	9AM-4PM	9AM-4PM	N/A	N/A
WEEK 10: ADVENTURE CAMP	K-7TH	8:30 AM-4:30PM	\$275	\$385	N/A	N/A	N/A	N/A	N/A	N/A	N/A	N/A	N/A	8:30AM-4:30PM	N/A
WEEK 11: ADVENTURE CAMP	K-7TH	8:30 AM-4:30PM	\$275	\$385	N/A	N/A	N/A	N/A	N/A	N/A	N/A	N/A	N/A	N/A	8:30AM-4:30PM

JR ADVENTURE DAY CAMPS – when combining AM & PM camps, campers remain in our care during 12PM-1PM time gap for lunch

JR. ADVENTURE: 5 DAY FULL DAY	AGES 3-5	9AM-4PM	\$314	\$440	FULL	FULL	FULL	FULL	FULL	FULL	FULL	FULL	FULL	FULL	N/A	N/A
JR. ADVENTURE: 5 DAY AM	AGES 3-5	9AM-12PM	\$200	\$280	FULL	FULL	FULL	FULL	FULL	FULL	FULL	FULL	FULL	FULL	N/A	N/A
JR. ADVENTURE: 5 DAY PM	AGES 3-5	1PM-4PM	\$200	\$280	FULL	FULL	FULL	FULL	FULL	FULL	FULL	FULL	FULL	FULL	N/A	N/A
JR. ADVENTURE: 3 DAY FULL DAY	AGES 3-5	9AM-4PM	\$228	\$320	FULL	FULL	FULL	FULL	FULL	FULL	FULL	FULL	FULL	FULL	N/A	N/A

COUNSELOR IN TRAINING (CIT)

COUNSELOR IN TRAINING 5 DAY	8TH-10TH	9AM-4PM	\$200	\$280	9AM-4PM	9AM-4PM	9AM-4PM	9AM-4PM	9AM-4PM	9AM-4PM	9AM-4PM	9AM-4PM	9AM-4PM	9AM-4PM	N/A	N/A
--	----------	---------	-------	-------	---------	---------	---------	---------	---------	---------	---------	---------	---------	---------	-----	-----

SPECIALTY CAMPS (5 DAY) – when combining AM & PM camps, campers remain in our care during 12PM-1PM time gap for lunch

AQUA BUCKS SWIM	K-3RD	9AM-12PM	\$183	\$257	FULL	FULL	FULL	FULL	FULL	FULL	FULL	FULL	FULL	FULL	N/A	N/A
ARCHERY	3RD-7TH	1PM-4PM	\$183	\$257	N/A	FULL	N/A	FULL	FULL	FULL	FULL	FULL	FULL	N/A	N/A	N/A
CAMPERS CREATE	K-5TH	9AM-12PM	\$183	\$257	FULL	FULL	FULL	N/A	FULL	FULL	N/A	FULL	FULL	N/A	N/A	
CAMP CHEFS AM	3RD-7TH	9AM-12PM	\$183	\$257	N/A	FULL	N/A	FULL	FULL	FULL	FULL	FULL	FULL	N/A	N/A	N/A
CAMP CHEFS PM	3RD-7TH	1PM-4PM	\$183	\$257	N/A	FULL	N/A	FULL	FULL	FULL	FULL	FULL	FULL	N/A	N/A	N/A
DANCE	K-7TH	1PM-4PM	\$183	\$257	FULL	FULL	Modern	Jazz	Modern	FULL	FULL	FULL	FULL	FULL	N/A	N/A
EMPOWER U!	7TH-10TH	1PM-4PM	\$0	\$0	N/A	N/A	N/A	N/A	N/A	N/A	1PM-4PM	N/A	N/A	N/A	N/A	
FUTURE BUILDERS	K-5TH	9AM-12PM	\$183	\$257	9AM-12PM	FULL	9AM-12PM	FULL	FULL	FULL	FULL	FULL	FULL	N/A	N/A	N/A
KIDS YOGA CAMP	1ST-5TH	1PM-4PM	\$183	\$257	N/A	N/A	N/A	FULL	N/A	N/A	N/A	N/A	N/A	N/A	N/A	N/A
Y.S.T.E.M.	K-5TH	1PM-4PM	\$183	\$257	N/A	FULL	FULL	FULL	FULL	FULL	FULL	FULL	FULL	N/A	N/A	N/A

Place an "X" on your desired camp in the corresponding box

GRADE in Sept '23	TIME	MEMBER PRICE	NON MEMBER PRICE	WEEK1 6/19-6/23	WEEK2 6/26-6/30	WEEK3 7/3-7/7 no camp 7/4	WEEK4 7/10-7/14	WEEK5 7/17-7/21	WEEK6 7/24-7/28	WEEK7 7/31-8/4	WEEK8 8/7-8/11	WEEK9 8/14-8/18	WEEK10 8/21-8/25	WEEK11 8/28-8/31 no camp 9/1
----------------------	------	-----------------	------------------------	--------------------	--------------------	---------------------------------	--------------------	--------------------	--------------------	-------------------	-------------------	--------------------	---------------------	------------------------------------

SPORTS CAMPS (5 DAY) - when combining AM & PM camps, campers remain in our care during 12PM-1PM time gap for lunch

BASKETBALL	K-7TH	9AM-12PM	\$160	\$224	FULL	N/A	FULL	N/A	N/A	N/A	N/A	N/A	FULL	N/A	N/A	
CHEERLEADING	K-7TH	9AM-12PM	\$160	\$224	FULL	N/A	FULL	FULL	N/A	FULL	N/A	FULL	N/A	N/A	N/A	
CROSS COUNTRY	K-7TH	9AM-12PM	\$160	\$224	N/A	N/A	N/A	N/A	N/A	N/A	9AM-12PM	N/A	N/A	N/A	N/A	
GYMNASTICS	K-7TH	9AM-12PM	\$160	\$224	N/A	FULL	N/A	N/A	FULL	N/A	FULL	N/A	N/A	N/A	N/A	
KIDS TRI CAMP	3RD-7TH	9AM-12PM	\$160	\$224	N/A	N/A	N/A	N/A	N/A	FULL	N/A	N/A	N/A	N/A	N/A	
NERF CAMP AM	K-5TH	9AM-12PM	\$160	\$224	N/A	FULL	N/A	N/A	FULL	N/A	N/A	N/A	N/A	N/A	N/A	
NERF CAMP PM	K-5TH	1PM-4PM	\$160	\$224	N/A	N/A	N/A	FULL	N/A	N/A	FULL	N/A	N/A	N/A	N/A	
NFL FLAG FOOTBALL	K-7TH	9AM-12PM	\$187	\$262	N/A	N/A	N/A	FULL	N/A	FULL	N/A	FULL	N/A	N/A	N/A	
OBSTACLE NINJA	K-3RD	1PM-4PM	\$160	\$224	N/A	FULL	FULL	N/A	FULL	FULL	N/A	FULL	FULL	N/A	N/A	
SKATE AND SCOOTER AM	K-7TH	9AM-12PM	\$160	\$224	9AM-12PM	FULL	9AM-12PM	9AM-12PM	9AM-12PM	9AM-12PM	9AM-12PM	9AM-12PM	FULL	9AM-12PM	N/A	N/A
SKATE AND SCOOTER PM	K-7TH	1PM-4PM	\$160	\$224	1PM-4PM	1PM-4PM	1PM-4PM	1PM-4PM	1PM-4PM	1PM-4PM	1PM-4PM	1PM-4PM	1PM-4PM	1PM-4PM	N/A	N/A
SOCCER	K-7TH	9AM-12PM	\$160	\$224	N/A	FULL	N/A	N/A	FULL	N/A	FULL	N/A	N/A	N/A	N/A	
SPORTS FRENZY	K-7TH	1PM-4PM	\$160	\$224	1PM-4PM	1PM-4PM	1PM-4PM	1PM-4PM	1PM-4PM	1PM-4PM	1PM-4PM	1PM-4PM	1PM-4PM	FULL	N/A	N/A

ESPORTS CAMPS (5 DAYS) - when combining AM & PM camps, campers remain in our care during 12PM-1PM time gap for lunch

ESPORTS GAMING CAMPS AM	3RD-7TH	9AM-12PM	\$183	\$257	Roblox, Fall Guys & Minecraft	Fortnite, Overwatch & Spellbreak	Super Smash Bros, Multiversus & Brawlhalla	Rocket League, NBA & Madden	Gran Turismo, Forza Motorsport & Mario Kart	FULL	Fortnite, Overwatch & Spellbreak	Super Smash Bros, Multiversus & Brawlhalla	Rocket League, NBA & Madden	Gran Turismo, Forza Motorsport & Mario Kart	Camper Favorites
ESPORTS TechU PM	3RD-7TH	1PM-4PM	\$183	\$257	Minecraft & Code**	Roblox & Code**	Unity Game Design & Animation**	Intro to Game Building in Python**	Building a Gaming PC	Minecraft & Code**	Roblox & Code**	Esports Academy	Streaming & Content Creating	Esports Academy	Gaming: Camper Favorites

EXTENDED CARE

EARLY CARE 5 DAYS	K-7TH	7AM-9AM	\$50	\$60	7AM-9AM	7AM-9AM	7AM-9AM	7AM-9AM	7AM-9AM	7AM-9AM	7AM-9AM	7AM-9AM	7AM-9AM	7AM-9AM	N/A	N/A
LATE CARE 5 DAY	K-7TH	4PM-6PM	\$50	\$60	4PM-6PM	4PM-6PM	4PM-6PM	4PM-6PM	4PM-6PM	4PM-6PM	4PM-6PM	4PM-6PM	4PM-6PM	4PM-6PM	N/A	N/A
EARLY CARE 3 DAY	K-7TH	7AM-9AM	\$39	\$55	7AM-9AM	7AM-9AM	7AM-9AM	7AM-9AM	7AM-9AM	7AM-9AM	7AM-9AM	7AM-9AM	7AM-9AM	7AM-9AM	N/A	N/A
LATE CARE 3 DAY	K-7TH	4PM-6PM	\$39	\$55	4PM-6PM	4PM-6PM	4PM-6PM	4PM-6PM	4PM-6PM	4PM-6PM	4PM-6PM	4PM-6PM	4PM-6PM	4PM-6PM	N/A	N/A

FIELD TRIPS

Field Trips are for campers registered in Full Day Adventure Camp ONLY	K-7TH	9AM-4PM	\$45	\$45	N/A	N/A	N/A	WED 7/12 Funzilla	N/A	N/A	WED 8/2 Phila. Rock Gym	N/A	N/A	N/A	N/A
--	-------	---------	------	------	-----	-----	-----	-------------------	-----	-----	-------------------------	-----	-----	-----	-----

*Camper receives a skate deck to paint (+\$25)

**Camper receives STEM.org certificate of completion (+\$29)

Please note: Camps will be prorated for weeks 3 and 11

Updated 3/8/23

REGISTER NOW AT YMCABHC.ORG/CAMP

YMCA OF BUCKS AND HUNTERDON COUNTIES | Doylestown

2500 Lower State Road, Doylestown, PA 18901 | 215.348.8131 | ymcabhc.org

YMCA ADMIN USE ONLY

Date Received: _____

Time Received: _____

Received by: _____

Ability Camps

Ability Camp is a "camp within a camp" designed for youth who, in order to be safe and successful, require smaller ratios than what you may find in a traditional camp environment. Ability Camp is a fully mainstreamed, inclusive program that provides support for children and adolescents entering grades Kindergarten through age 22 in smaller ratios, alongside their age-similar peers of all abilities. Counselors work to provide physical, emotional, behavior, and cognitive support to help campers fully participate and succeed in outdoor/indoor camp activities.

To be successful in Ability Camp, campers should be mainstreamed at least part of the day during school and be successful in a 1:3 ratio. Campers also must be independent with toileting and feeding. Students who require 1:1 support for any of the above are welcome at Ability Camp with the assistance of a personal care aid, TSS or other support person provided by the family.

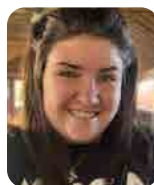
Ability Camp K-7th Grade

Ability Adventure, Specialty and Sports camps are immersive, mainstream, inclusive summer camp programs for children and tweens entering grades Kindergarten through 7th with intellectual, developmental, and physical disabilities or behavioral health concerns.

Ability Summer Teen Leaders in Training (LITs)

The LITs program is designed for teens ages 14-22 with intellectual and developmental disabilities to develop practical skills in volunteering/job training, community learning, and health & wellness.

An application is required for all Ability Camp programs. For more information about Ability Camps, view a brochure on our website at ymcabhc.org/camp or email abilitycamp@ymcabhc.org.



Kaitlyn Stevens

Associate Director of Ability and Camp
abilitycamp@ymcabhc.org

Application Process

Registration for Ability Camp programs is by application only. Parent input and involvement in planning and managing behaviors is also expected. Prior to enrolling in Ability Camp at the Y, parents/guardians must complete an intake application packet. Please see below for details regarding the application process.

Application Process for NEW Campers/LITs*

Your child is considered a new camper if they have never attended an Ability Camp program at YMCA of Bucks and Hunterdon Counties.

1. Contact camp leadership staff to obtain an application intake packet.
2. Complete application intake packet and return to camp leadership staff.
3. The intake application packet is reviewed by camp leadership staff.
4. Upon review, a new camper interview will be scheduled with camp leadership staff, at least one parent/guardian, and the camper present. Camp registration approval decision will be made after this meeting and then relayed to parents.
5. If approved to register, proceed to the Welcome Center to complete the registration packet and camp selection grid. Financial and liability waivers will be signed at this time and camp payments scheduled.

Application Process for RETURNING Campers/LITs*

Your child is considered a returning camper if they have previously attended at least one full week of Ability Camp program at YMCA of Bucks and Hunterdon Counties.

1. Contact camp leadership staff to obtain a returning camper update form.
2. Complete update form and return to camp leadership staff.
3. Form is reviewed by camp leadership staff. Camp registration approval decision will be made once form is reviewed.**
4. If approved to register, proceed to the Welcome Center to complete the registration packet and camp selection grid. Financial and liability waivers will be signed at this time and camp payments scheduled.

Doylestown Ability CAMP GRID

Place an "X" on your desired camp in the corresponding box

GRADE in Sept '23	TIME	MEMBER PRICE	NON MEMBER PRICE	WEEK1 6/19-6/23	WEEK 2 6/26-6/30	WEEK 3 7/3-7/7 no camp 7/4	WEEK 4 7/10-7/14	WEEK 5 7/17-7/21	WEEK 6 7/24-7/28	WEEK 7 7/31-8/4	WEEK 8 8/7-8/11	WEEK 9 8/14-8/18	WEEK 10 8/21-8/25	WEEK 11 8/28-8/31 no camp 9/1
----------------------	------	-----------------	------------------------	--------------------	---------------------	----------------------------------	---------------------	---------------------	---------------------	--------------------	--------------------	---------------------	----------------------	-------------------------------------

ABILITY ADVENTURE DAY CAMPS – when combining AM & PM camps, campers remain in our care during 12PM-1PM time gap for lunch

ABILITY ADV CAMP: 5 DAY FULL DAY	K-7TH	9AM-4PM	\$389	\$545	9AM-4PM	9AM-4PM	9AM-4PM	9AM-4PM	9AM-4PM	9AM-4PM	9AM-4PM	9AM-4PM	FULL	9AM-4PM	N/A	N/A
ABILITY ADV CAMP: 5 DAY AM	K-7TH	9AM-12PM	\$228	\$320	9AM-12PM	9AM-12PM	9AM-12PM	9AM-12PM	9AM-12PM	9AM-12PM	9AM-12PM	FULL	9AM-12PM	9AM-12PM	N/A	N/A
ABILITY ADV CAMP: 5 DAY PM	K-7TH	1PM-4PM	\$228	\$320	1PM-4PM	1PM-4PM	1PM-4PM	1PM-4PM	1PM-4PM	1PM-4PM	1PM-4PM	1PM-4PM	1PM-4PM	1PM-4PM	N/A	N/A
ABILITY ADV CAMP: 3 DAY FULL DAY	K-7TH	9AM-4PM	\$257	\$360	9AM-4PM	9AM-4PM	9AM-4PM	9AM-4PM	9AM-4PM	9AM-4PM	9AM-4PM	9AM-4PM	9AM-4PM	9AM-4PM	N/A	N/A
ABILITY ADV CAMP: 5 DAY ESY SCHEDULE	K-7TH	PM ONLY: Mon-Thurs FRIDAY: 9AM-4PM	\$246	\$345	N/A	N/A	FULL	FULL	FULL	FULL	FULL	FULL	FULL	N/A	N/A	N/A
WEEK 10: ABILITY ADVENTURE CAMP	K-7TH	8:30AM- 4:30PM	\$389	\$545	N/A	N/A	N/A	N/A	N/A	N/A	N/A	N/A	N/A	N/A	FULL	N/A
WEEK 11: ABILITY ADV. CAMP	K-7TH	8:30AM- 4:30PM	\$389	\$545	N/A	N/A	N/A	N/A	N/A	N/A	N/A	N/A	N/A	N/A	N/A	FULL

ABILITY TEEN SUMMER LEADERS IN TRAINING (LITS)

ABILITY TEEN LEADERS: 5 DAY FULL DAY	AGES 14-22	9AM-4PM	\$375	\$525	9AM-4PM	FULL	9AM-4PM	9AM-4PM	9AM-4PM	9AM-4PM	9AM-4PM	9AM-4PM	FULL	FULL	N/A	N/A
ABILITY TEEN LEADERS: 5 DAY AM	AGES 14-22	9AM-12PM	\$214	\$300	9AM-12PM	FULL	9AM-12PM	9AM-12PM	9AM-12PM	9AM-12PM	9AM-12PM	9AM-12PM	FULL	FULL	N/A	N/A
ABILITY TEEN LEADERS: 5 DAY PM	AGES 14-22	1PM-4PM	\$214	\$300	1PM-4PM	FULL	1PM-4PM	1PM-4PM	1PM-4PM	1PM-4PM	1PM-4PM	1PM-4PM	FULL	FULL	N/A	N/A
ABILITY TEEN LEADERS: 3 DAY FULL DAY	AGES 14-22	9AM-4PM	\$228	\$320	9AM-4PM	FULL	9AM-4PM	9AM-4PM	9AM-4PM	9AM-4PM	9AM-4PM	9AM-4PM	FULL	FULL	N/A	N/A
ABILITY TEEN LEADERS: 5 DAY ESY SCHEDULE	AGES 14-22	PM ONLY: Mon-Thurs FRIDAY: 9AM-4PM	\$246	\$345	N/A	N/A	FULL	FULL	FULL	FULL	FULL	FULL	N/A	N/A	N/A	N/A
WEEK 10: TEEN LEADERS CAMP	AGES 14-22	8:30AM- 4:30PM	\$375	\$525	N/A	N/A	N/A	N/A	N/A	N/A	N/A	N/A	N/A	N/A	FULL	FULL

SPECIALTY CAMPS (5 DAYS) – when combining AM & PM camps, campers remain in our care during 12PM-1PM time gap for lunch

AQUA BUCKS SWIM CAMP	K-3RD	9AM-12PM	\$257	\$360	FULL	9AM-12PM	FULL	9AM-12PM	FULL	FULL	FULL	FULL	FULL	N/A	N/A	N/A
ARCHERY	3RD-7TH	1PM-4PM	\$257	\$360	N/A	FULL	N/A	N/A	FULL	FULL	FULL	FULL	FULL	N/A	N/A	N/A
CAMPERS CREATE	K-5TH	9AM-12PM	\$257	\$360	FULL	9AM-12PM	9AM-12PM	FULL	FULL	FULL	FULL	FULL	FULL	FULL	N/A	N/A
CAMP CHEFS AM	3RD-7TH	9AM-12PM	\$257	\$360	N/A	FULL	N/A	FULL	FULL	FULL	FULL	FULL	FULL	N/A	N/A	N/A
CAMP CHEFS PM	3RD-7TH	1PM-4PM	\$257	\$360	N/A	FULL	N/A	FULL	FULL	FULL	FULL	FULL	FULL	N/A	N/A	N/A
DANCE	K-7TH	1PM-4PM	\$257	\$360	FULL	FULL	FULL	FULL	FULL	FULL	Hip Hop	FULL	Jazz	FULL	N/A	N/A
EMPOWER U!	7TH-10TH	1PM-4PM	\$0	\$0	N/A	N/A	N/A	N/A	N/A	N/A	FULL	N/A	N/A	N/A	N/A	N/A
FUTURE BUILDERS	K-5TH	9AM-12PM	\$257	\$360	FULL	FULL	FULL	FULL	FULL	9AM-12PM	FULL	FULL	FULL	N/A	N/A	N/A
KIDS YOGA CAMP	1ST-5TH	1PM-4PM	\$257	\$360	N/A	N/A	N/A	FULL	N/A	N/A	N/A	N/A	N/A	N/A	N/A	N/A
Y STEM	K-5TH	1PM-4PM	\$257	\$360	FULL	FULL	FULL	FULL	FULL	1PM-4PM	FULL	FULL	FULL	N/A	N/A	N/A

Place an "X" on your desired camp in the corresponding box	GRADE in Sept '23	TIME	MEMBER PRICE	NON MEMBER PRICE	WEEK1 6/19-6/23	WEEK2 6/26-6/30	WEEK3 7/3-7/7 no camp 7/4	WEEK4 7/10-7/14	WEEK5 7/17-7/21	WEEK6 7/24-7/28	WEEK7 7/31-8/4	WEEK8 8/7-8/11	WEEK9 8/14-8/18	WK10 8/21-8/25	WK11 8/28-8/31 no camp 9/1
--	-------------------	------	--------------	------------------	-----------------	-----------------	---------------------------	-----------------	-----------------	-----------------	----------------	----------------	-----------------	----------------	----------------------------

SPORTS CAMPS (5 DAYS) - when combining AM & PM camps, campers remain in our care during 12PM-1PM time gap for lunch

BASKETBALL	K-7TH	9AM-12PM	\$196	\$275	FULL	N/A	FULL	N/A	N/A	N/A	N/A	N/A	FULL	N/A	N/A
CHEERLEADING	K-7TH	9AM-12PM	\$196	\$275	FULL	N/A	FULL	FULL	N/A	FULL	N/A	FULL	N/A	N/A	N/A
CROSS COUNTRY	K-7TH	9AM-12PM	\$196	\$275	N/A	N/A	N/A	N/A	N/A	N/A	FULL	N/A	N/A	N/A	N/A
GYMNASTICS	K-7TH	9AM-12PM	\$196	\$275	N/A	FULL	N/A	N/A	N/A	N/A	9AM-12PM	N/A	N/A	N/A	N/A
KIDS TRI CAMP	3RD-7TH	9AM-12PM	\$196	\$275	N/A	N/A	N/A	N/A	N/A	FULL	N/A	N/A	N/A	N/A	N/A
NERF CAMP AM	K-5TH	9AM-12PM	\$196	\$275	N/A	9AM-12PM	N/A	N/A	FULL	N/A	N/A	N/A	N/A	N/A	N/A
NERF CAMP PM	K-5TH	1PM-4PM	\$196	\$275	N/A	N/A	N/A	FULL	N/A	N/A	FULL	N/A	N/A	N/A	N/A
NFL FLAG FOOTBALL	K-7TH	9AM-12PM	\$223	\$313	N/A	N/A	N/A	FULL	N/A	FULL	N/A	9AM-12PM	N/A	N/A	N/A
OBSTACLE NINJA	K-3RD	1PM-4PM	\$196	\$275	N/A	FULL	FULL	N/A	FULL	1PM-4PM	N/A	1PM-4PM	FULL	N/A	N/A
SKATE AND SCOOTER AM	K-7TH	9AM-12PM	\$196	\$275	FULL	FULL	FULL	FULL	FULL	FULL	FULL	FULL	FULL	N/A	N/A
SKATE AND SCOOTER PM	K-7TH	1PM-4PM	\$196	\$275	1PM-4PM	FULL	FULL	FULL	FULL	FULL	FULL	FULL	FULL	N/A	N/A
SOCCER	K-7TH	9AM-12PM	\$196	\$275	N/A	FULL	N/A	N/A	9AM-12PM	N/A	FULL	N/A	N/A	N/A	N/A
SPORTS FRENZY	K-7TH	1PM-4PM	\$196	\$275	FULL	FULL	FULL	FULL	FULL	FULL	FULL	FULL	FULL	1PM-4PM	N/A

ESPORTS CAMPS (5 DAYS) - when combining AM & PM camps, campers remain in our care during 12PM-1PM time gap for lunch

ESPORTS GAMING CAMPS AM	3RD-7TH	9AM-12PM	\$257	\$360	FULL	FULL	Super Smash Bros, Multiversus & Brawlhalla	FULL	FULL	Roblox, Fall Guys & Minecraft	Fortnite, Overwatch & Spellbreak	FULL	FULL	N/A	N/A
ESPORTS TECH CAMPS PM	3RD-7TH	1PM-4PM	\$257	\$360	FULL	FULL	FULL	Intro to Game Building in Python**	Building a Gaming PC	Minecraft & Code**	FULL	FULL	Streaming & Content Creating	N/A	N/A

EXTENDED CARE

EARLY CARE 5 DAYS	ALL AGES	7AM-9AM	\$50	\$60	7AM-9AM	7AM-9AM	7AM-9AM	7AM-9AM	7AM-9AM	7AM-9AM	7AM-9AM	7AM-9AM	7AM-9AM	7AM-9AM	N/A	N/A
LATE CARE 5 DAY	ALL AGES	4PM-6PM	\$50	\$60	4PM-6PM	4PM-6PM	4PM-6PM	4PM-6PM	4PM-6PM	4PM-6PM	4PM-6PM	4PM-6PM	4PM-6PM	4PM-6PM	N/A	N/A
EARLY CARE 3 DAY	ALL AGES	7AM-9AM	\$39	\$55	7AM-9AM	7AM-9AM	7AM-9AM	7AM-9AM	7AM-9AM	7AM-9AM	7AM-9AM	7AM-9AM	7AM-9AM	7AM-9AM	N/A	N/A
LATE CARE 3 DAY	ALL AGES	4PM-6PM	\$39	\$55	4PM-6PM	4PM-6PM	4PM-6PM	4PM-6PM	4PM-6PM	4PM-6PM	4PM-6PM	4PM-6PM	4PM-6PM	4PM-6PM	N/A	N/A

FIELD TRIPS

Field Trips are for campers registered in Full Day Adventure Camp or Ability Adventure Camp ONLY	K-7TH	9AM-4PM	\$45	\$45	N/A	N/A	N/A	WED 7/12 Funzilla	N/A	N/A	WED 8/2 Phila. Rock Gym	N/A	N/A	N/A	N/A
---	-------	---------	------	------	-----	-----	-----	-------------------	-----	-----	-------------------------	-----	-----	-----	-----

*Camper receives a skate deck to paint (+\$25)
 **Camper receives STEM.org certificate of completion (+\$29)
 Please note: Camps will be prorated for weeks 3 and 11
 Updated 4/24/23

REGISTER NOW AT YMCABHC.ORG/CAMP
YMCA OF BUCKS AND HUNTERDON COUNTIES | Doylestown
 2500 Lower State Road, Doylestown, PA 18901 | 215.348.8131 | ymcabhc.org

YMCA ADMIN USE ONLY

Date Received: _____
 Time Received: _____
 Received by: _____



Doylestown Selection Grid 2023

Why are writers always cold? Because they're surrounded by so many "drafts"!

There are no drafts at Camp Bucks; only fun summer tales.

Please fill out the weeks you have registered your child for and keep for your "reference".

WEEK 1: 6/19-6/23	FULL DAY CAMP:
	AM CAMP ONLY:
	PM CAMP ONLY:
WEEK 2: 6/26-6/30	FULL DAY CAMP:
	AM CAMP ONLY:
	PM CAMP ONLY:
WEEK 3: 7/3-7/7 *no camp 7/4	FULL DAY CAMP:
	AM CAMP ONLY:
	PM CAMP ONLY:
WEEK 4: 7/10-7/14	FULL DAY CAMP:
	AM CAMP ONLY:
	PM CAMP ONLY:
WEEK 5: 7/17-7/21	FULL DAY CAMP:
	AM CAMP ONLY:
	PM CAMP ONLY:
WEEK 6: 7/24-7/28	FULL DAY CAMP:
	AM CAMP ONLY:
	PM CAMP ONLY:
WEEK 7: 7/31-8/4	FULL DAY CAMP:
	AM CAMP ONLY:
	PM CAMP ONLY:
WEEK 8: 8/7-8/11	FULL DAY CAMP:
	AM CAMP ONLY:
	PM CAMP ONLY:
WEEK 9: 8/14-8/18	FULL DAY CAMP:
	AM CAMP ONLY:
	PM CAMP ONLY:
WEEK 10: 8/21-8/25	FULL DAY ADVENTURE CAMP:
	AM ESPORTS ONLY:
	PM ESPORTS ONLY:



Camp Bucks and Camp Hunterdon will help ensure that your camper has a summer to remember. Our engaging camp offerings and activities ensure that your child learns a new skill, makes a new friend and has a summer to remember.

Ready to **Register?**
Change of Plans?
Have a **Question?**

Our Parent Handbook can answer your additional questions regarding registration and billing, who to contact with questions about your camp location and more.

PARENT HANDBOOK



Your [Camp's Facebook Group](#) is the group to join to get the inside scoop in the life of your camper. Stay in the know by signing up for text alerts to never miss a spirit day reminder, inclement weather notification or our weekly newsletters.

FRIENDSHIP. BELONGING. ENCOURAGEMENT.



"AMAZING staff, really cares about the campers and super engaging. Very inclusive to different learning styles too."

"Very well run and my child had a blast! Will definitely be coming back!"

"All of the staff are professional, warm and welcoming."

"Camp has been wonderful this summer for my kids. Both of them looked forward to going everyday. The staff has been great and very flexible with our scheduling needs."

Thank you to our sponsors:

